

# RWSC

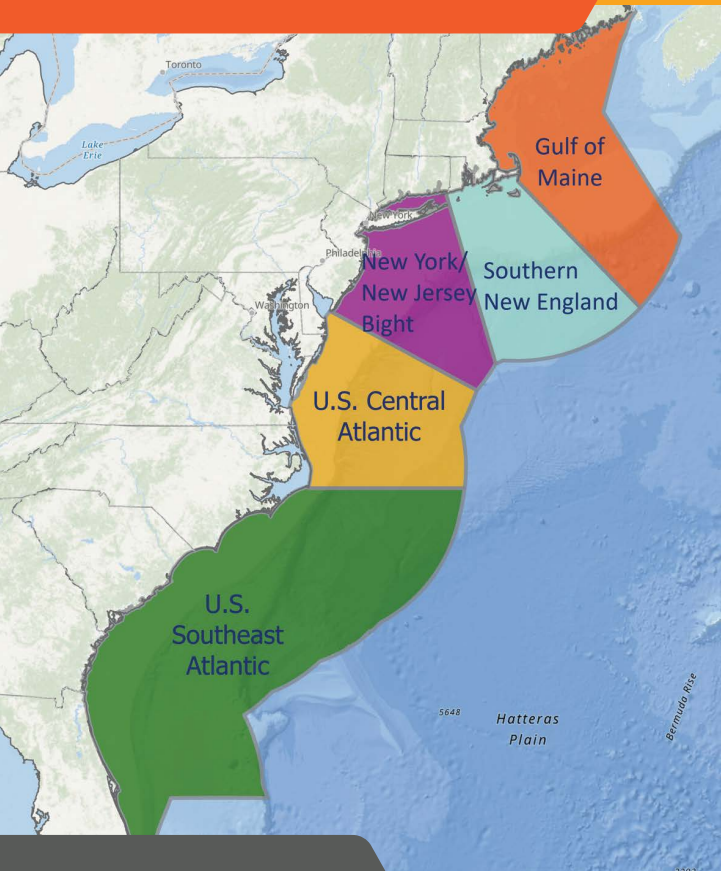
Regional Wildlife Science Collaborative  
for Offshore Wind

## MISSION

To collaboratively and effectively conduct and coordinate relevant, credible, and efficient regional monitoring and research of wildlife and marine ecosystems that supports the advancement of environmentally responsible and cost-efficient offshore wind power development activities in U.S. Atlantic waters



## Regional Wildlife Science Collaborative for Offshore Wind



## WHY REGIONAL COLLABORATION?

- Federal agencies, states, and offshore wind companies are each funding wildlife data collection and research in U.S. Atlantic waters.
- Ensure that data collection and research methods and products (i) meet the needs of decision-makers, (ii) are scientifically sound, (iii) standardized, and (iv) made available for use as soon as feasible or appropriate to inform and improve decision-making.
- Many species will interact with multiple offshore wind developments over time. Need to understand potential ecosystem effects and explore broader and/or consistent options for mitigating impacts.
- Facilitate progress toward state renewable energy goals, federal offshore wind targets, and U.S. Ocean Climate Action Plan objectives.

**MORE INFO**

<https://rwsc.org>

**DIRECTOR**  
Emily Shumchenia, PhD  
[emily.shumchenia@rwsc.org](mailto:emily.shumchenia@rwsc.org)





SEA TURTLES • HABITAT & ECOSYSTEM • MARINE MAMMALS • BIRDS & BATS • PROTECTED FISH SPECIES • TECHNOLOGY • DATA GOVERNANCE

## Integrated Science Plan for Offshore Wind, Wildlife, and Habitat in U.S. Atlantic Waters

The RWSC Steering Committee, state and federal government agencies, offshore wind companies, environmental nonprofits, and RWSC’s host entities—the Northeast Regional Ocean Council and Mid-Atlantic Regional Council on the Ocean with the Coastal States Stewardship Foundation—collaboratively developed the Science Plan with the research community to inform future offshore wind and wildlife data collection and research.

- RWSC is serving as a coordination hub for offshore wind research to increase collaboration, limit redundancy, suggest common data standards, and increase data sharing and transparency.
- The Science Plan describes data and research needs for the larger community, whether funded by the RWSC or not.
- The Science Plan provides a framework for the RWSC Steering Committee when making decisions on what projects to fund via the RWSC.

<https://rwsc.org/science-plan>

**EXPERT SUBCOMMITTEES MEET REGULARLY TO SHARE UPDATES AND IMPLEMENT THE SCIENCE PLAN.**

**VIEW THE PUBLIC CALENDAR AT [RWSC.ORG/EVENTS](https://rwsc.org/events)**

Visit the Science Plan website



# RWSC

Regional Wildlife Science Collaborative for Offshore Wind



### 2024 STEERING COMMITTEE

- Atlantic Shores Offshore Wind
- Bureau of Ocean Energy Management
- Maryland Department of Natural Resources/Maryland Energy Administration
- National Audubon Society
- National Oceanic and Atmospheric Administration
- National Wildlife Federation
- New Hampshire Department of Fish & Game
- New York State Energy Research and Development Authority
- Orsted North America
- The Nature Conservancy
- US Fish & Wildlife Service
- Vineyard Wind